

Apprentice Event - Equipotential Grounding

Mean Time: 9 Minutes

Drop Dead Time: 16 Minutes

Chief Judge: Jason Hucks

The apprentice will be required to ground a three phase structure. This is a simulated de-energized 12 KV event. Apprentice will be required to actually test and ground the structure following the 1st Edition Santee Cooper Safety Manual rules for equipotential grounding.

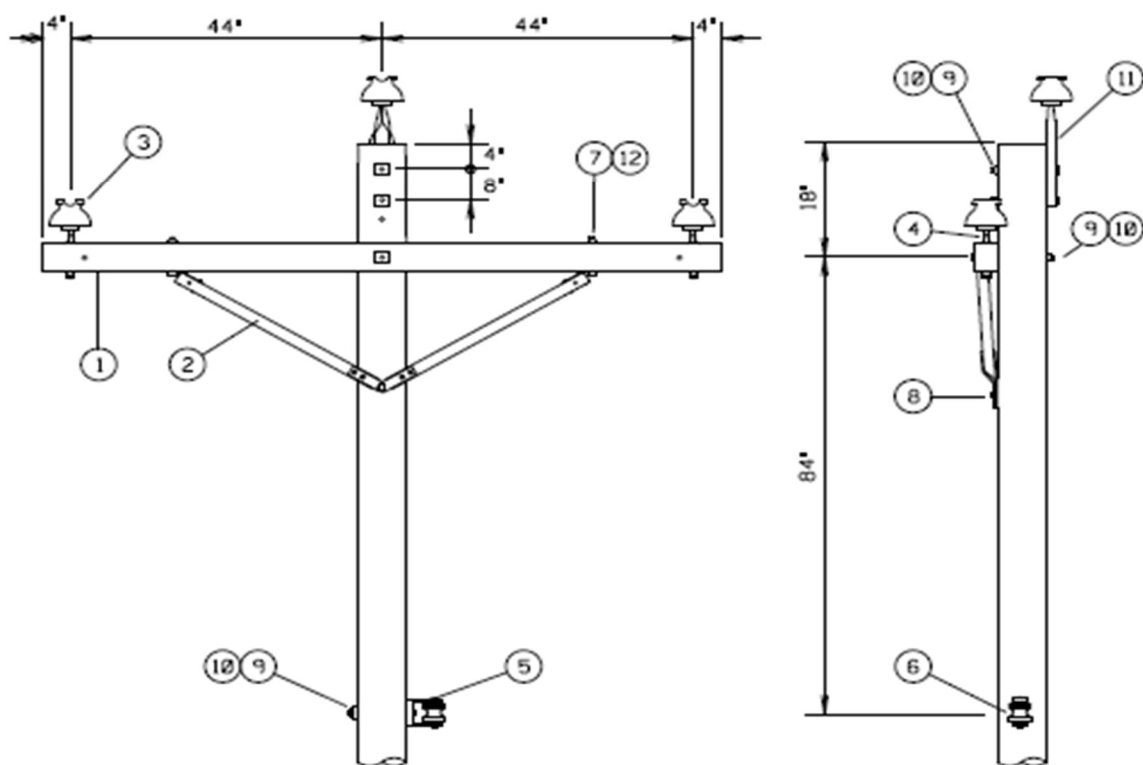
1. The apprentice will be allowed 5 minutes of setup time. The apprentice may direct questions to the judge at this time.
2. No cover is required since the structure will be effectively grounded.
3. A grounding bracket and shotgun stick with a universal adapter and tester will be hanging on the pole.
4. A handline, grounds and grunt bags will also be provided and must be used.
5. Time starts at Judges' signal.
6. The apprentice must indicate to the judge that all phases have been tested and are deenergized.
7. The apprentice must indicate to the judge that all phases have been grounded before grounds can be removed.
8. Time stop with climbers has both feet on the ground and fall arrest detached from the pole.
9. Judging will continue until all material is packed up and the event site is restored to the original condition.
10. All general rodeo rules apply.

OVERHEAD DISTRIBUTION STANDARDS

DRAWING: TC-2

PAGE: 18-5

DATE: 1-29-14



NOTES:

- A. GROUNDING DETAILS CAN BE FOUND IN THE GROUNDING SECTION OF THIS MANUAL.
 B. IN COASTAL AREAS USE INSULATOR #022-220125

ITEM	QTY.	DESCRIPTION	ITEM ID NO.	ITEM	QTY.	DESCRIPTION	ITEM ID NO.		
1	1	CROSSARM, 4" X 5" X 8"	562-203119	9	4	BOLT, MCH. $\frac{5}{8}$ " X REQ'D			
2	2	BRACE, WOOD CA 60"	563-209104	10	5	WASHER 2" SQ. $\frac{11}{16}$ " HOLE	070-181964		
3	3	INSULATOR, PIN TYPE	022-220134	11	1	PIN, STEEL POLE TOP	072-185252		
4	2	PIN, STEEL INS. $\frac{5}{8}$ " X 6 $\frac{1}{2}$ "	072-185224	12	3	WASHER, 2" SQ. $\frac{5}{8}$ " HOLE	070-181961		
5	1	CLEVIS, SEC.	071-229174						
6	1	INSULATOR, SEC. SPOOL	023-225102						
7	2	BOLT, MCH. $\frac{1}{2}$ " X 7"	070-181436						
8	1	SCREW, LAG $\frac{1}{2}$ " X 4 $\frac{1}{2}$ "	070-181866	GROUNDING MATERIAL - SEE GROUNDING SECTION					
10	1-14	CORRECT LAG SCREW	TLA TLA	SINGLE PRIMARY SUPPORT CROSSARM CONSTRUCTION TRIANGULAR SPACING THREE PHASE 7.2 / 12.47kV					
09	1-10	ADD ITEM NUMBERS	TLA TLA						
08	7-03	POLY INSULATOR CHG	KT JEC SER						
07	2-98	CORRECTION	JEC JEC CVS						
REV	DATE	DESCRIPTION	BY	D.ENG	D.SUP	D.ENG kb	BY kb/ps	APVD htl	APVD

dist/ods/tc-2.dgn

Personal Protective Grounding

Eye Nut will be here

Grounding Bar will be positioned here.

Grounding Bar





Tool Hanger for
Shotgun Stick