

**Jefferies Generating Station  
Ash Pond A  
Applicability Report**

***§257.100(f)(1) Legacy CCR surface impoundment applicability report.***

This Applicability Report for Jefferies Generating Station's Ash Pond A has been created in accordance with 40 C.F.R. §257.100(f)(1) of the EPA's Legacy CCR Surface Impoundment Rule.

***(i) Except as provided in paragraph (f)(1)(iii) of this section, owners and operators of legacy CCR surface impoundments must prepare a report for each legacy CCR surface impoundment no later than Friday, November 8, 2024. The owner or operator has prepared the applicability report when the report has been placed in the facility's operating record as required by § 257.105(k)(1).***

This Applicability Report was placed in Jefferies Generating Station's operating record on November 8, 2024.

***(i) cont... At a minimum, the report for each legacy CCR surface impoundment must contain:***

***(A) The name and address of the person(s) owning and operating the legacy CCR surface impoundment with their business phone number and email address.***

Santee Cooper (South Carolina Public Service Authority)  
1 Riverwood Drive  
Moncks Corner, SC 29461  
Contact: Brian Holmes, Manager Waste Management, A203  
1-843-761-8000 ext. 4975  
[brian.holmes@santee.cooper.com](mailto:brian.holmes@santee.cooper.com)

***(B) The name associated with the legacy CCR surface impoundment.***

Jefferies Ash Pond A

***(C) Information to identify the legacy CCR surface impoundment, including a figure of the facility and where the unit is located at the facility, facility address, and the latitude and longitude of the facility.***

Figure 1 (attached) shows the generating facility and identifies Ash Pond A's location.

Jefferies Generating Station  
463 Power House Road  
Moncks Corner, SC 29461

Longitude: 33.241182°  
Latitude: -79.982358°

***(D) The identification number of the legacy CCR surface impoundment if one has been assigned by the state.***

The South Carolina Department of Environmental Services (SCDES), formally known as the South Carolina Department of Health and Environmental Control, has not pursued a state CCR permit program. Therefore, no state identification numbers associated with the CCR Rule have been assigned to any legacy impoundments including the Jefferies Ash Pond A. The facility operates under National Pollutant Discharge Elimination System (NPDES) permit number SC0001091.

***(E) A description of the current site conditions, including the current use of the inactive facility.***

Jefferies Generating Station (JGS) was a 398-megawatt coal-fired generating station owned and operated by Santee Cooper. Its first two units entered commercial operation in 1954 and could initially burn both coal and oil. They were later converted to burn oil only. Two additional coal units came online in 1970. All four fossil-fuel units are now retired with the coal-fired units retired December 31, 2012, and the oil-fired units retired October 1, 2015.

The Jefferies Generating Station's two industrial wastewater treatment ponds, known as Ash Pond A and the Decant Pond, were constructed in 1970. During unit operations, CCR was sluiced to Ash Pond A and the wastewater then entered the Decant Pond for polishing and pH adjustment as needed. CCR was not sluiced to the Decant Pond. Ash Pond A has not received CCR or CCR wastewater since the coal-fired units were decommissioned in 2012. Since that time, operations and maintenance of Ash Pond A has been limited to activities associated with ongoing excavation and closure and industrial stormwater treatment from site industrial runoff. See Figure 1 for additional site features.

The upper pond, Ash Pond A, is approximately 136 acres. Ash Pond A is an unlined basin that received predominantly fly ash, bottom ash, and boiler slag along with various industrial wastewater streams from the generating facility. Ash Pond A is bordered to the north by natural high ground and a CSX rail line, the east by a perimeter dike constructed of clayey fill material, the south by a divider dike, and the west by a spoil bank that serves as a dike. The spoil bank was constructed by dredging the Tailrace Canal and largely consists of predominantly Cooper marl with sandy clays which were excavated during the original dam project for Lake Moultrie.


The lower pond, Decant Pond, is approximately 49 acres. The Decant Pond is an unlined basin that received decant water from Ash Pond A. Ash was never sluiced directly to the Decant Pond during plant operations. Instead, the Decant Pond was operated as a polishing pond after the ash settled out in Ash Pond A before being discharged through the permitted NPDES outfall to the Tailrace Canal. The Decant Pond is bordered to the north by a divider dike, the east and south by a perimeter dike constructed of clayey fill material, and the west by the spoil bank. The Decant Pond is not classified as a Legacy Impoundment.

SCDES approved a State Closure Plan for Ash Pond A in November 2016. The Closure Plan requires closure through removal of all CCR and a layer of subsurface soil for decontamination, with a deadline to remove all CCR by December 31, 2030. Excavation is ongoing and on target to meet this closure deadline, and the excavated CCR is being beneficially used as a replacement for Portland cement to make concrete.

## Owner/Operator or Professional Engineer Applicability Report Certification

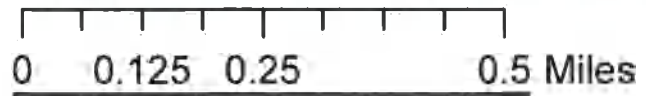
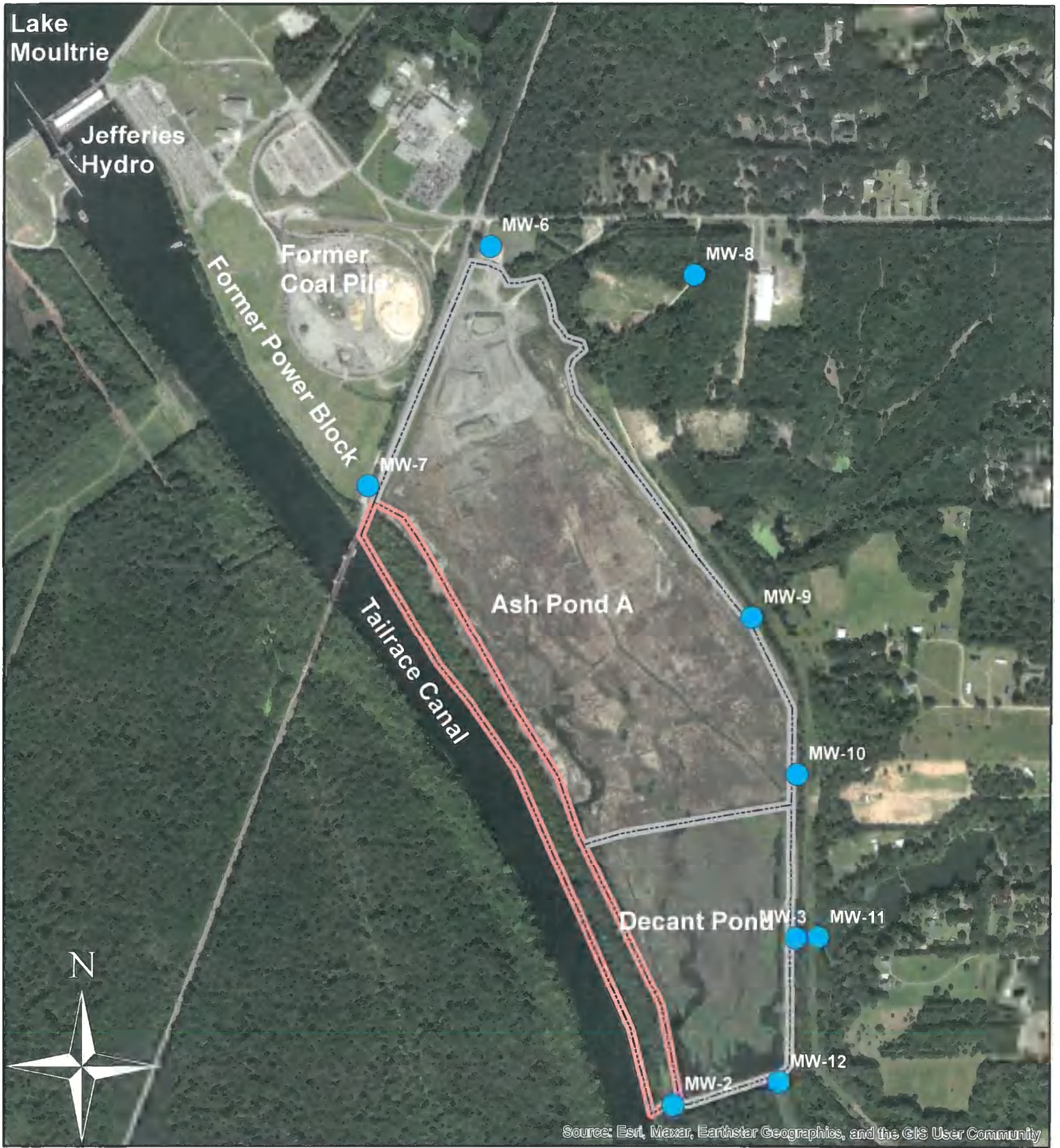
In accordance with *40 C.F.R. §257.100(f)(1)(ii)(A)*, I certify under penalty of law that I have personally examined and am familiar with the information submitted in this demonstration and all attached documents, and that based on my inquiry of those individuals immediately responsible for obtaining the information, I believe that the submitted information is true, accurate, and complete. I am aware that there are significant penalties for submitting false information, including the possibility of fine and imprisonment.

Signature:



---

Brian Holmes  
Manager Waste Management



**Legend**

- Groundwater Monitoring Wells
- Pond Boundary
- Spoil Pile/Pond Boundary

Santee Cooper  
 Jefferies Generating Station  
 Moncks Corner, SC

**Ash Pond A Site Map**

Figure 1

September 2024